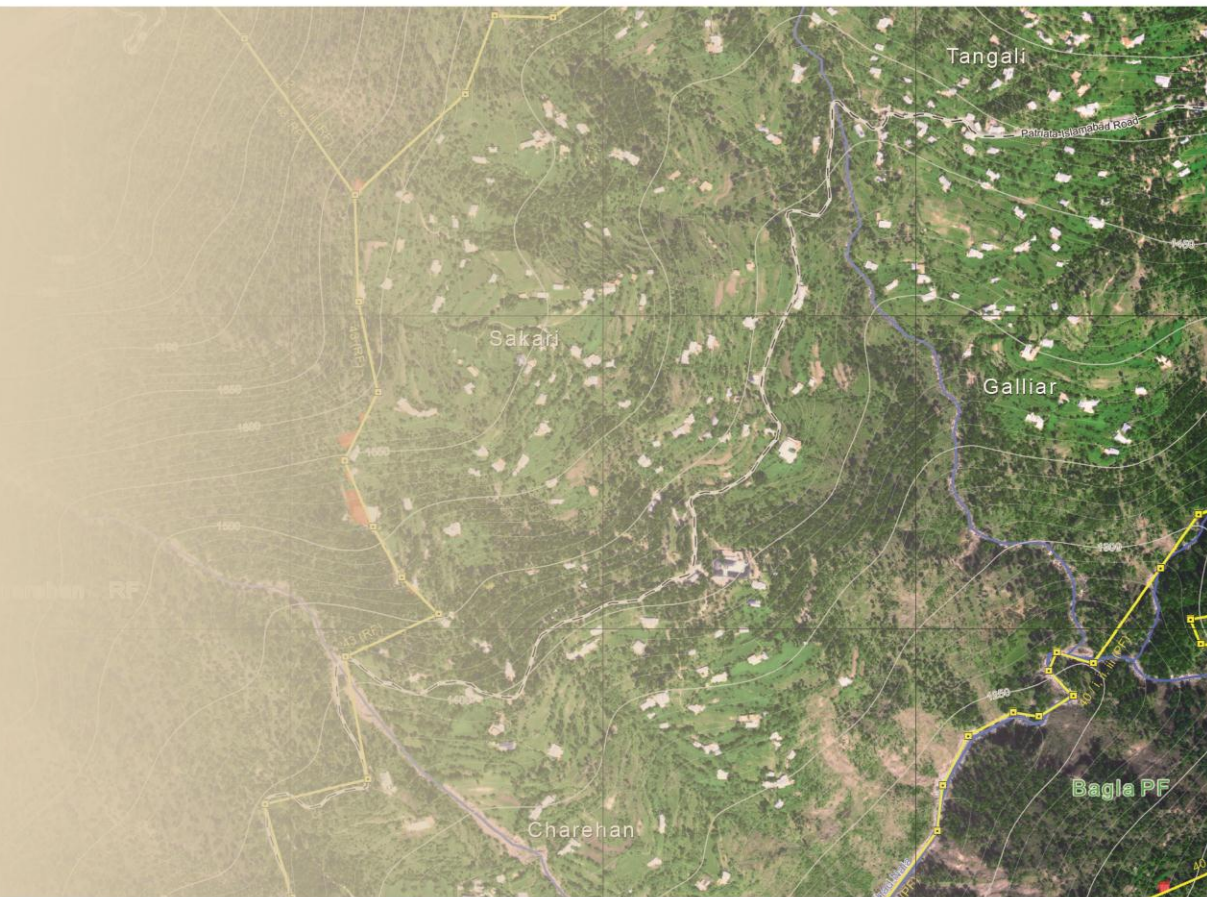


## Lower Topa Forest Sub Division



## Lower Topa Forest Sub Division

### Forest Land

2,482.38 ha (6,134.11 acres)

### Administration

Lower Topa Forest Sub Division is divided into two blocks and seventeen beats for administrative management purposes. It comprises of 20 forest compartments which are further divided into sub compartments for better management on silvicultural basis. One Sub Divisional Forest Officer (SDFO), one Sub Divisional Clerk (SDC), two Block Officers (BOs), twenty two forest guards, five *chowkidars* and one peon are deployed by PFD to look after the matters of Lower Topa Forest Sub Division.

### Locality

Geographically Lower Topa Forest Sub Division can be described as;

**East:** Covered by private lands of villages of tehsil Murree and Kotli Satiyan.

**North:** Private lands of villages of tehsil Murree State Forests of Municipal Forest Range and Sehr Bagla.

**South:** Private lands of villages of tehsil Murree, State Forests of Ban Forest Range of Murree Forest Division.

**West:** Private lands of villages of tehsil Murree, State Forest of Sambli Forest Sub Division and Municipal Forest Range are the boundary of Lower Topa Forest Sub Division along with Cantonment Forests.

### Road Network

- a. Five major roads pass through/along the areas of Lower Topa Forest Sub Division i.e.
  - i. IMDCW Road (Murree Express Way)
  - ii. 17 Mile-Angoori-Gulara Gali-Patriata Road
  - iii. Lower Topa-Gulara Gali-Kotli Satiyan Road
  - iv. Gulara Gali-Gehal-Dhanda-Chijana Road
  - v. Sain-Lower Topa Road
- b. Twenty Two other metalled roads run through these forests which also bisect the areas of different forest compartments and connect different villages of tehsil Murree and Kotli Satiyan.
- c. A number of non-metalled (*Kacha/shingled*) roads also pass through this Sub-Division. Most of these roads have been constructed illegally.
- d. Many other bridle/inspection paths also exist in the area, which are used by the local population of the adjoining villages and government officials.

### Watershed-River/Nullahs

Forest areas of Lower Topa Forest Sub Division fall in the main watershed/catchment area of Indus and Swan River. This forest sub division also play important role in feeding Simli Dam (ICT) by means of Swan and major nullahs. Furthermore some tributaries of Jehlum river from this area contribute in Mangla Dam.

### Included Chaks

More than 53 Chaks (local populations with private land ownership - called "*Shikmi chaks*") exist inside the forests of Lower Topa Forest Sub Division.

### Biodiversity

Lower Topa Forest Sub Division is mainly comprised of pine species (*Chir Pine/Pinus roxburghii*, *Kail/Pinus wallichiana*, patches of *Deodar/Cedrus deodara*) and mixed forest of Broadleaved species (*Rein/Quercus incana*, *Ban Akhroot/Aesculus indica*, *Papular/Populus alba Linnaeus*, *Willow/Salix acmophylla*, *Rubinia/Robinia pseudo-acacia*, and *Ailanthus/Ailanthus altissima*). Hundred per cent area of Lower Topa Forest Sub Division is covered by the pure pine forest i.e. Kail crop on 55% area, Chir Pine crop on 45% and also exist the mixture of broadleaved species with Pine species. 1,203.57 ha (2,974.11 acres) are declared as Reserved Forest and remaining 1,278.80 ha (3,160 acres) as Protected Forest category.

Ghora Gali has frequently used terrain of Common Leopard. It has the Grey Goral, Rhesus Monkey, Koklass Pheasant and a wide variety of small mammals, reptiles, amphibians and birds.

### Legal Status of External Forest Boundaries

- i. Length of external delineated forest boundaries: 87.85 Km
- ii. Area of the delineated polygon is 2,439.12 ha (6,027.20 acres) which includes roads, rivers, *nullahs*, forest area, included *chaks* etc.
- iii. Forest Boundary Pillars marked: 628
- iv. Forest Boundary Pillars newly constructed: 216
- v. No. of encroachers detected: 453
- vi. Area under the encroachment/adverse possession: 48.09 ha (118.84 acres)
- vii. No. of FIRs registered: 27
- viii. Area Transferred to Other Departments: 13.35 ha (33 acres)
- ix. Area under Government Buildings: 20.23 ha (50 acres)
- x. Litigation/Civil suit cases: 27
- xi. Area retrieved form encroachers: 61.75 ha (152.59 acres)

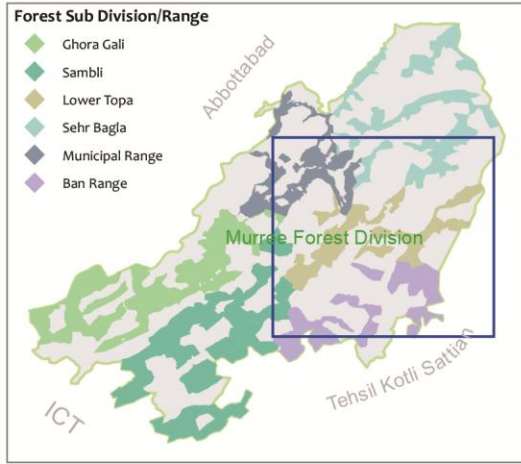




**Map Title**

GIS BASED BOUNDARY DELINEATION OF MURREE FOREST DIVISION INCLUDING THE ENCLOSED FOREST SECTIONS ENCROACHMENT MAP (1<sup>ST</sup> EDITION 2013) LOWER TOPA FOREST SUB DIVISION

**Map Locator**



**Map Legend**

- Locality
- ▲ Spot Height (m)
- Forest Bench Mark
- Road
- Forest Boundary
- - - Murree Forest Division
- ~ Drainage/Water channel
- Water pond/tank

**Land Status**

- Lower Topa Forest Sub Div.
- Encroachment
- Leased Area
- Transferred Land/ Govt. Buildings
- Included Chak

**Map Scale & Coordinate System**

Reference Scale: 1:56,455 on A3 size paper

Coordinate System: GCS WGS 1984

Datum: WGS 1984

Grids and Graticule:

Geographic Grid: WGS 1984

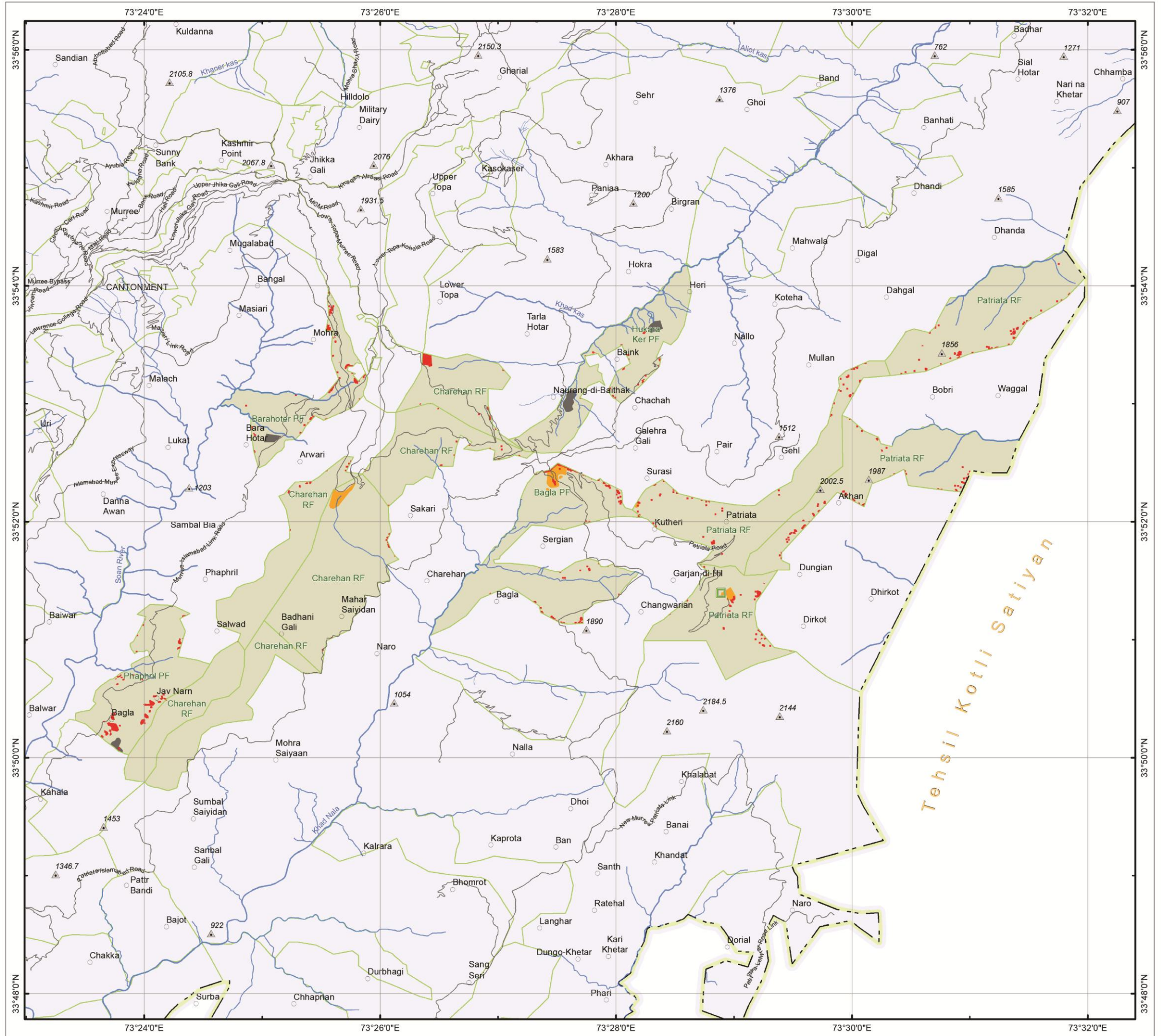
Value in: DD° MM' SS"



**Map Credits**

Map Produced by: GIS Laboratory, WWF - Pakistan in February, 2013

Copyrights:  
It is an offence under the Copyright Act to make and issue any copy or copies of this map or any part of this map with or without alterations and additions, unless the prior written permission of the concerned department has been obtained.



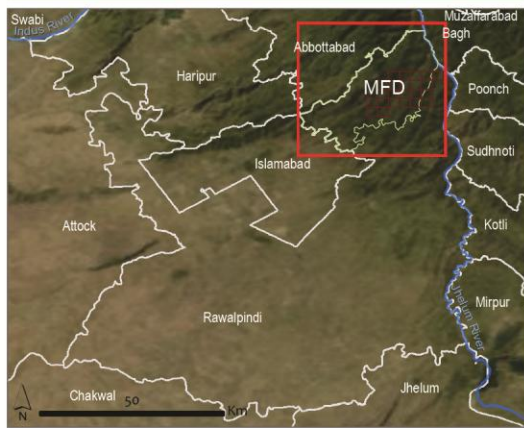


**Map Title**  
 GIS BASED BOUNDARY DELINEATION OF MURREE FOREST DIVISION INCLUDING THE ENCROACHED FOREST SECTIONS INDEX TO MAPS (1<sup>ST</sup> EDITION 2013) LOWER TOPA FOREST SUB DIVISION

**Map Locator**



**Map Index**



**Map Scale & Coordinate System**

Reference Scale: 1:130,000 on A3 size paper  
 Coordinate System: GCS WGS 1984  
 Datum: WGS 1984  
 Grids and Graticule:  
 Geographic Grid: WGS 1984  
 Value in: DD° MM' SS"  
 0 2.5 5 Kilometres

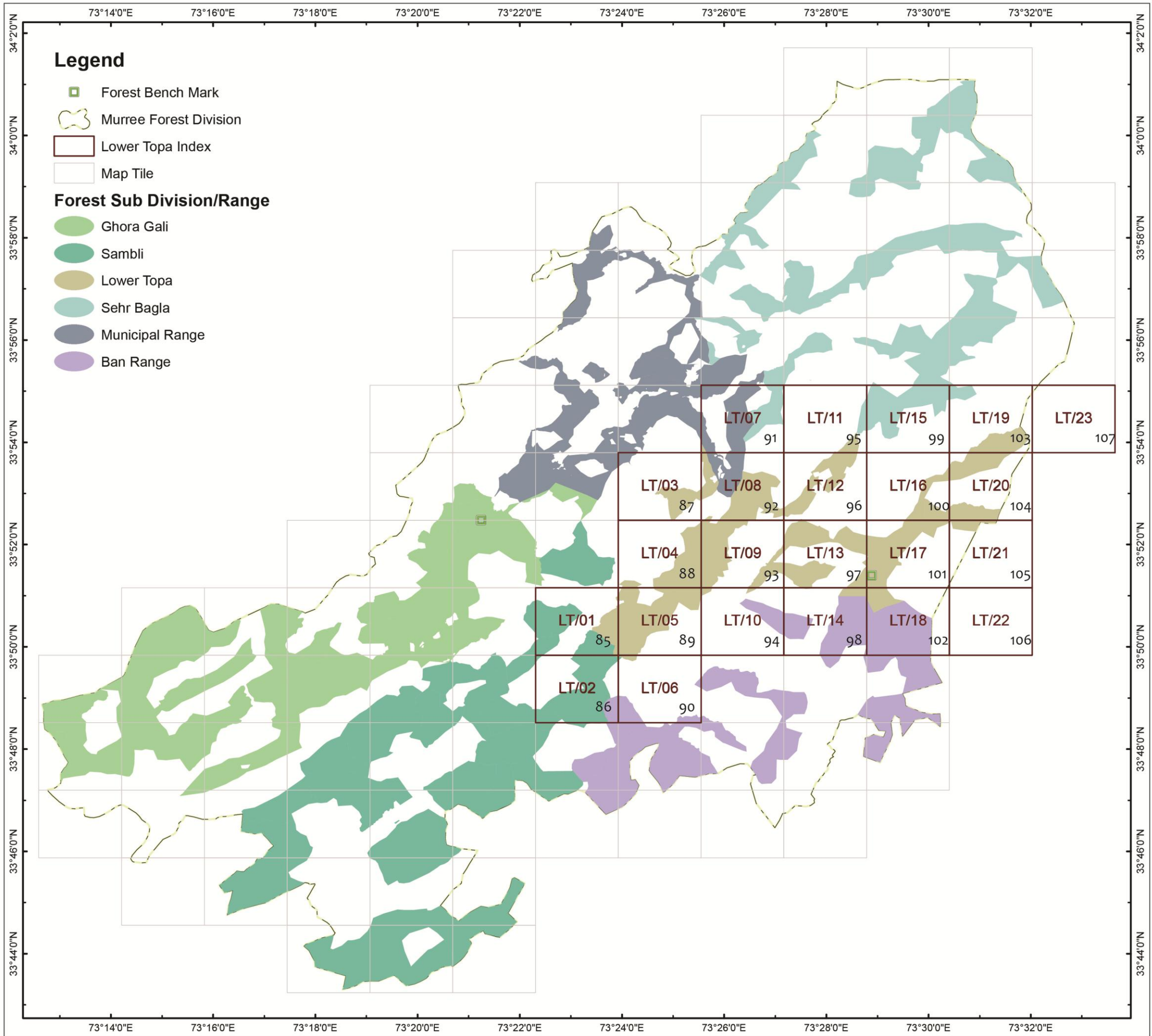
**Map Index Legend**

Reading the Index  
 LT/01 Map Tile ID  
 00 Map Page Number

**Map Credits**

Map Produced by: GIS Laboratory, WWF - Pakistan in February, 2013

Copyrights:  
 It is an offence under the Copyright Act to make and issue any copy or copies of this map or any part of this map with or without alterations and additions, unless the prior written permission of the concerned department has been obtained.





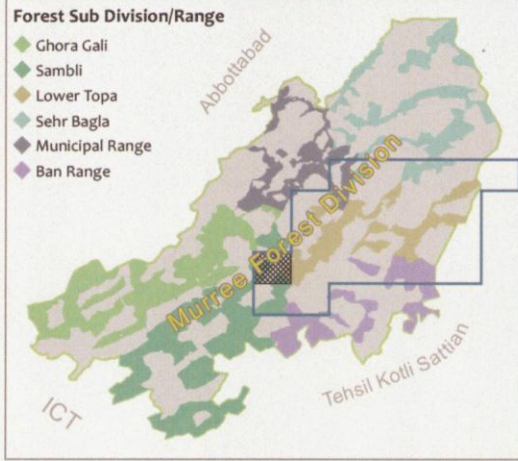
**Map Title**

GIS BASED BOUNDARY DELINEATION OF MURREE FOREST DIVISION INCLUDING THE ENCLOSED FOREST SECTIONS  
 MAP ID : LT/01 (1<sup>ST</sup> EDITION 2013)  
 LOWER TOPA FOREST SUB DIVISION

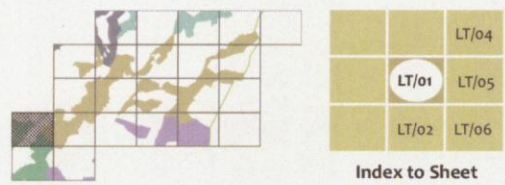
**Map Locator**

**Forest Sub Division/Range**

- ◆ Ghora Gali
- ◆ Sambli
- ◆ Lower Topa
- ◆ Sehr Bagla
- ◆ Municipal Range
- ◆ Ban Range

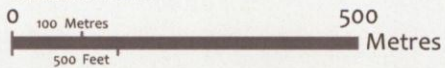


**Map Index**



**Map Scale & Coordinate System**

**Reference Scale:** 1:10,000 on A3 size paper  
 1 inch ~ 278 yards or 1 centimetre ~ 100 metres  
**Coordinate System:** GCS WGS 1984  
 Datum: WGS 1984  
**Grids and Graticule:**  
 Geographic Grid: WGS 1984  
 Value in: DD° MM' SS"  
 Metric Grid: UTM Zone 43S  
 Value in: Metres



**Map Legend**

- Pillar Mark
- Forest Bench Mark
- ▭ Sehadada
- ▲ Spot Height (m)
- Road
- Contour (m)
- Contour interval: 50m (164 ft)
- Forest Boundary
- Ambiguity Area
- Included Chak
- Murree Forest Division
- Water Channel/Nullah
- Water Pond/Tank
- Encroachment

**Map Credits**

Map Produced by: GIS Laboratory, WWF - Pakistan in February, 2013

Copyrights:  
 It is an offence under the Copyright Act to make and issue any copy or copies of this map or any part of this map with or without alterations and additions, unless the prior written permission of the concerned department has been obtained.



**Divisional Forest Officer**  
 Murree Forest Division  
 Punjab Forest Department



**Officer-in-Charge**  
 No. 4 Party,  
 Survey of Pakistan, Murree



**Tehsildar Murree**  
 Punjab Revenue Department



**Manager GIS**  
 GIS Laboratory  
 World Wide Fund for Nature - Pakistan





**Map Title**

GIS BASED BOUNDARY DELINEATION OF MURREE FOREST DIVISION INCLUDING THE ENCROACHED FOREST SECTIONS  
 MAP ID : LT/02 (1<sup>st</sup> EDITION 2013)  
 LOWER TOPA FOREST SUB DIVISION

**Map Locator**

**Forest Sub Division/Range**

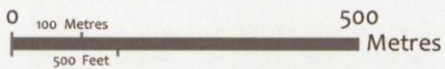


**Map Index**



**Map Scale & Coordinate System**

**Reference Scale:** 1:10,000 on A3 size paper  
 1 inch ~ 278 yards or 1 centimetre ~ 100 metres  
**Coordinate System:** GCS WGS 1984  
 Datum: WGS 1984  
**Grids and Graticule:**  
 Geographic Grid: WGS 1984  
 Value in: DD° MM' SS"  
 Metric Grid: UTM Zone 43S  
 Value in: Metres



**Map Legend**

- Pillar Mark
  - Forest Boundary
  - Forest Bench Mark
  - Ambiguity Area
  - Sehadda
  - Included Chak
  - Spot Height (m)
  - Water Channel/Nullah
  - Road
  - Water Pond/Tank
  - Contour (m)
  - Encroachment
- Contour interval: 50m (164 ft)

**Map Credits**

**Map Produced by:** GIS Laboratory, WWF - Pakistan in February, 2013

**Copyrights:**  
 It is an offence under the Copyright Act to make and issue any copy or copies of this map or any part of this map with or without alterations and additions, unless the prior written permission of the concerned department has been obtained.



**Divisional Forest Officer**  
 Murree Forest Division  
 Punjab Forest Department



**Officer-in-Charge**  
 No. 4 Party,  
 Survey of Pakistan, Murree



**Tehsildar Murree**  
 Punjab Revenue Department



**Manager GIS**  
 GIS Laboratory  
 World Wide Fund for Nature - Pakistan





**Map Title**

GIS BASED BOUNDARY DELINEATION OF MURREE FOREST DIVISION INCLUDING THE ENCROACHED FOREST SECTIONS  
 MAP ID : LT/03 (1<sup>st</sup> EDITION 2013)  
 LOWER TOPA FOREST SUB DIVISION

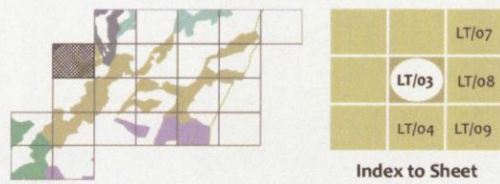
**Map Locator**

**Forest Sub Division/Range**

- ◆ Ghora Gali
- ◆ Sambli
- ◆ Lower Topa
- ◆ Sehr Bagla
- ◆ Municipal Range
- ◆ Ban Range

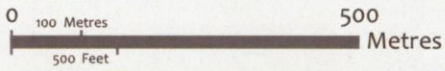


**Map Index**



**Map Scale & Coordinate System**

**Reference Scale:** 1:10,000 on A3 size paper  
 1 inch ~ 278 yards or 1 centimetre ~ 100 metres  
**Coordinate System:** GCS WGS 1984  
 Datum: WGS 1984  
**Grids and Graticule:**  
 Geographic Grid: WGS 1984  
 Value in: DD° MM' SS"  
 Metric Grid: UTM Zone 43S  
 Value in: Metres



**Map Legend**

- Pillar Mark
- Forest Bench Mark
- Sehadda
- ▲ Spot Height (m)
- Road
- Contour (m)  
Contour interval: 50m (164 ft)
- Forest Boundary
- Ambiguity Area
- Included Chak
- Murree Forest Division
- Water Channel/Nullah
- Water Pond/Tank
- Encroachment

**Map Credits**

**Map Produced by:** GIS Laboratory, WWF - Pakistan in February, 2013

**Copyrights:**  
 It is an offence under the Copyright Act to make and issue any copy or copies of this map or any part of this map with or without alterations and additions, unless the prior written permission of the concerned department has been obtained.



**Divisional Forest Officer**  
 Murree Forest Division  
 Punjab Forest Department



**Officer-in-Charge**  
 No. 4 Party,  
 Survey of Pakistan, Murree



**Tehsildar Murree**  
 Punjab Revenue Department



**Manager GIS**  
 GIS Laboratory  
 World Wide Fund for Nature - Pakistan





**Map Title**

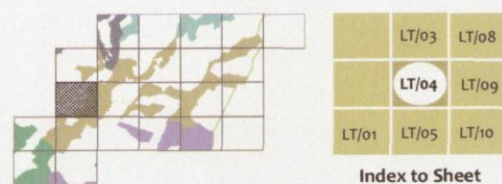
GIS BASED BOUNDARY DELINEATION OF MURREE FOREST DIVISION INCLUDING THE ENCREACHED FOREST SECTIONS  
 MAP ID : LT/04 (1<sup>st</sup> EDITION 2013)  
 LOWER TOPA FOREST SUB DIVISION

**Map Locator**

**Forest Sub Division/Range**



**Map Index**



**Map Scale & Coordinate System**

**Reference Scale:** 1:10,000 on A3 size paper  
 1 inch ~ 278 yards or 1 centimetre ~ 100 metres  
**Coordinate System:** GCS WGS 1984  
 Datum: WGS 1984  
**Grids and Graticule:**  
 Geographic Grid: WGS 1984  
 Value in: DD° MM' SS"  
 Metric Grid: UTM Zone 43S  
 Value in: Metres



**Map Legend**

- Pillar Mark
  - Forest Boundary
  - Forest Bench Mark
  - Ambiguity Area
  - Sehadda
  - Included Chak
  - Spot Height (m)
  - Murree Forest Division
  - Water Channel/Nullah
  - Road
  - Water Pond/Tank
  - Contour (m)
  - Encroachment
- Contour interval: 50m (164 ft)

**Map Credits**

**Map Produced by:** GIS Laboratory, WWF - Pakistan in February, 2013

Copyrights:  
 It is an offence under the Copyright Act to make and issue any copy or copies of this map or any part of this map with or without alterations and additions, unless the prior written permission of the concerned department has been obtained.



**Divisional Forest Officer**  
 Murree Forest Division  
 Punjab Forest Department



**Officer-in-Charge**  
 No. 4 Party,  
 Survey of Pakistan, Murree



**Tehsildar Murree**  
 Punjab Revenue Department



**Manager GIS**  
 GIS Laboratory  
 World Wide Fund for Nature - Pakistan





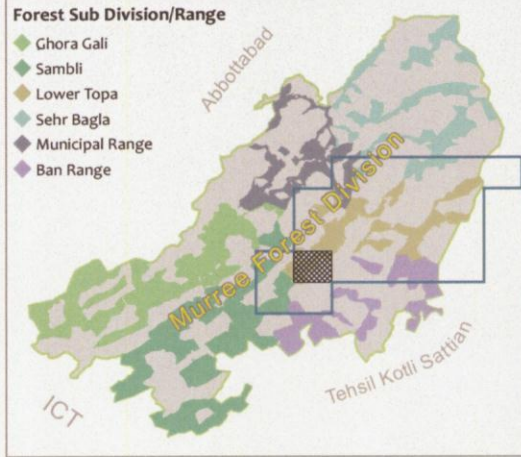
**Map Title**

GIS BASED BOUNDARY DELINEATION OF MURREE FOREST DIVISION INCLUDING THE ENCREACHED FOREST SECTIONS  
 MAP ID : LT/05 (1<sup>st</sup> EDITION 2013)  
 LOWER TOPA FOREST SUB DIVISION

**Map Locator**

**Forest Sub Division/Range**

- ◆ Ghora Gali
- ◆ Sambli
- ◆ Lower Topa
- ◆ Sehr Bagla
- ◆ Municipal Range
- ◆ Ban Range



**Map Index**



**Map Scale & Coordinate System**

**Reference Scale:** 1:10,000 on A3 size paper  
 1 inch ~ 278 yards or 1 centimetre ~ 100 metres  
**Coordinate System:** GCS WGS 1984  
 Datum: WGS 1984  
**Grids and Graticule:**  
 Geographic Grid: WGS 1984  
 Value in: DD° MM' SS"  
 Metric Grid: UTM Zone 43S  
 Value in: Metres



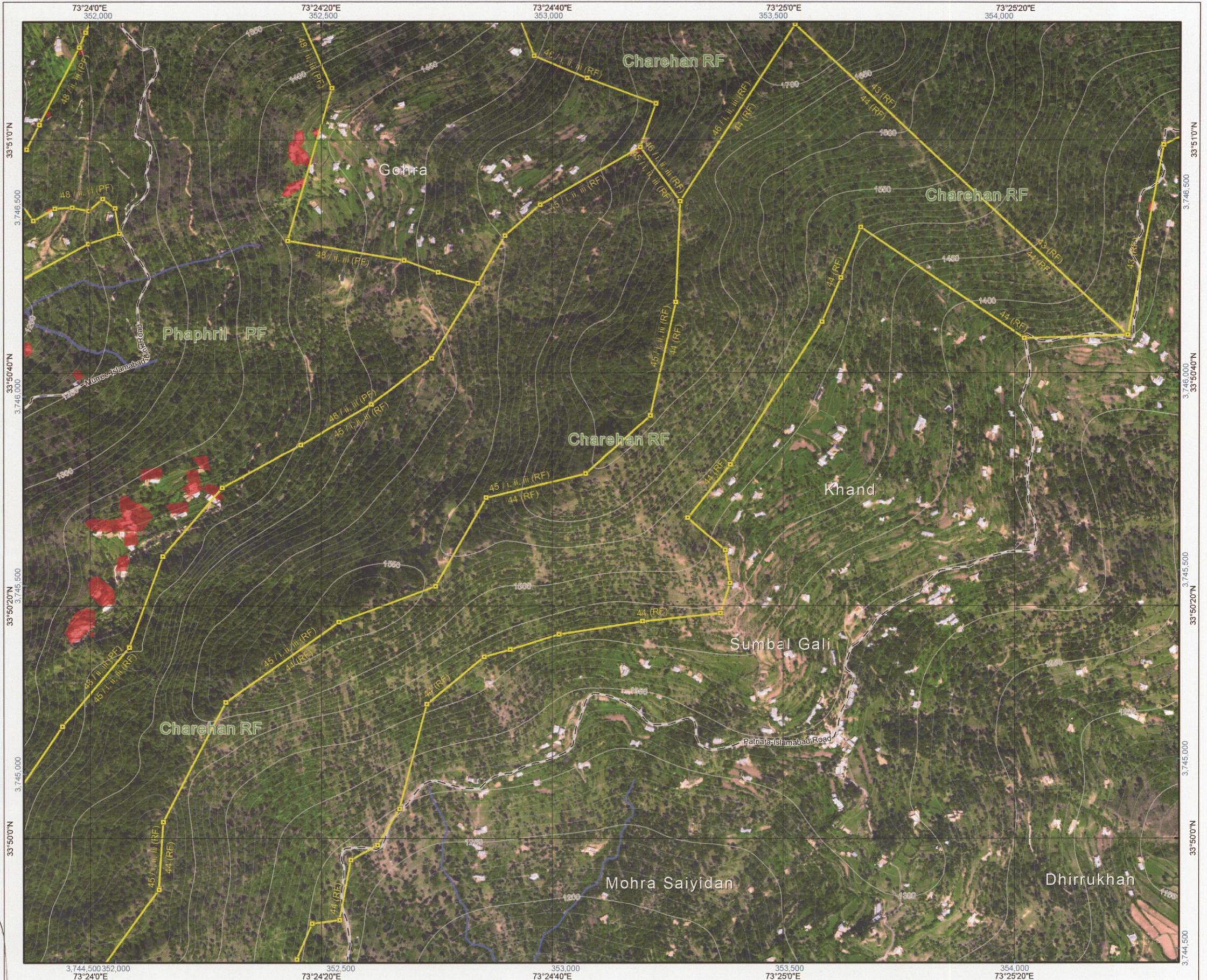
**Map Legend**

- Pillar Mark
- Forest Bench Mark
- ▭ Sehadha
- ▲ Spot Height (m)
- Road
- Contour (m)
- Contour interval: 50m (164 ft)
- Forest Boundary
- Ambiguity Area
- Included Chak
- Murree Forest Division
- Water Channel/Nullah
- Water Pond/Tank
- Encroachment

**Map Credits**

**Map Produced by:** GIS Laboratory, WWF - Pakistan in February, 2013

Copyrights:  
 It is an offence under the Copyright Act to make and issue any copy or copies of this map or any part of this map with or without alterations and additions, unless the prior written permission of the concerned department has been obtained.



**Divisional Forest Officer**  
 Murree Forest Division  
 Punjab Forest Department



**Officer-in-Charge**  
 No. 4 Party,  
 Survey of Pakistan, Murree



**Tehsildar Murree**  
 Punjab Revenue Department



**Manager GIS**  
 GIS Laboratory  
 World Wide Fund for Nature - Pakistan





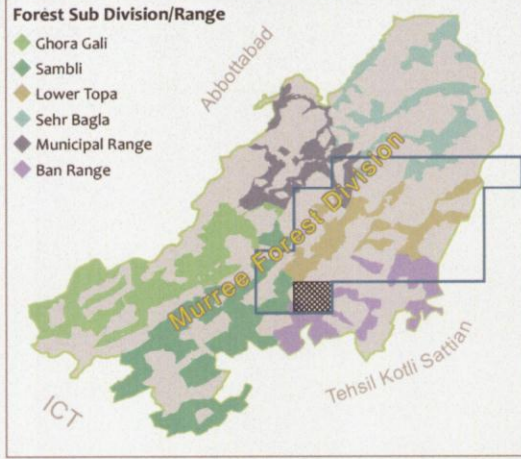
**Map Title**

**GIS BASED BOUNDARY DELINEATION OF MURREE FOREST DIVISION INCLUDING THE ENCLOSED FOREST SECTIONS**  
**MAP ID : LT/06 (1<sup>st</sup> EDITION 2013)**  
**LOWER TOPA FOREST SUB DIVISION**

**Map Locator**

**Forest Sub Division/Range**

- ◆ Ghora Gali
- ◆ Sambli
- ◆ Lower Topa
- ◆ Sehr Bagla
- ◆ Municipal Range
- ◆ Ban Range



**Map Index**



**Map Scale & Coordinate System**

**Reference Scale:** 1:110,000 on A3 size paper  
 1 inch ~ 278 yards or 1 centimetre ~ 100 metres  
**Coordinate System:** GCS WGS 1984  
 Datum: WGS 1984  
**Grids and Graticule:**  
 Geographic Grid: WGS 1984  
 Value in: DD° MM' SS"  
 Metric Grid: UTM Zone 43S  
 Value in: Metres



**Map Legend**

- Pillar Mark
- Forest Boundary
- Forest Bench Mark
- Ambiguity Area
- Sehadda
- Included Chak
- ▲ Spot Height (m)
- Murree Forest Division
- Water Channel/Nullah
- Road
- Water Pond/Tank
- Contour (m)
- Encroachment
- Contour interval: 50m (164 ft)

**Map Credits**

**Map Produced by:** GIS Laboratory, WWF - Pakistan in February, 2013

**Copyrights:**  
 It is an offence under the Copyright Act to make and issue any copy or copies of this map or any part of this map with or without alterations and additions, unless the prior written permission of the concerned department has been obtained.



**Divisional Forest Officer**  
 Murree Forest Division  
 Punjab Forest Department



**Officer-in-Charge**  
 No. 4 Party,  
 Survey of Pakistan, Murree



**Tehsildar Murree**  
 Punjab Revenue Department



**Manager GIS**  
 GIS Laboratory  
 World Wide Fund for Nature - Pakistan





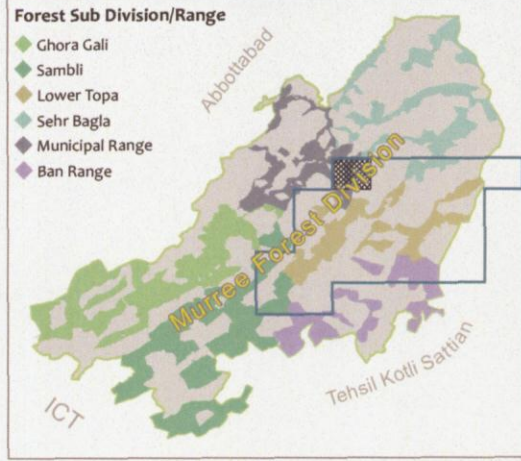
**Map Title**

**GIS BASED BOUNDARY DELINEATION OF MURREE FOREST DIVISION INCLUDING THE ENCROACHED FOREST SECTIONS**  
**MAP ID : LT/07 (1<sup>st</sup> EDITION 2013)**  
**LOWER TOPA FOREST SUB DIVISION**

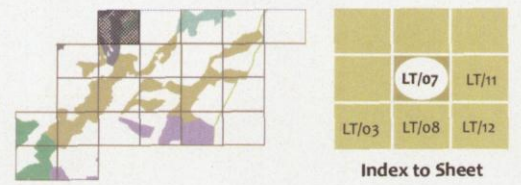
**Map Locator**

**Forest Sub Division/Range**

- ◆ Ghora Gali
- ◆ Sambli
- ◆ Lower Topa
- ◆ Sehr Bagla
- ◆ Municipal Range
- ◆ Ban Range



**Map Index**



**Map Scale & Coordinate System**

**Reference Scale:** 1:10,000 on A3 size paper  
 1 inch – 278 yards or 1 centimetre – 100 metres  
**Coordinate System:** GCS WGS 1984  
 Datum: WGS 1984  
**Grids and Graticule:**  
 Geographic Grid: WGS 1984  
 Value in: DD° MM' SS"  
 Metric Grid: UTM Zone 43S  
 Value in: Metres



**Map Legend**

- Pillar Mark
- Forest Bench Mark
- Sehadda
- ▲ Spot Height (m)
- Road
- Contour (m)
- Contour Interval: 50m (164 ft)
- Forest Boundary
- Ambiguity Area
- Included Chak
- Murree Forest Division
- Water Channel/Nullah
- Water Pond/Tank
- + Encroachment

**Map Credits**

**Map Produced by:** GIS Laboratory, WWF - Pakistan in February, 2013

**Copyrights:**  
 It is an offence under the Copyright Act to make and issue any copy or copies of this map or any part of this map with or without alterations and additions, unless the prior written permission of the concerned department has been obtained.



**Divisional Forest Officer**  
 Murree Forest Division  
 Punjab Forest Department



**Officer-in-Charge**  
 No. 4 Party,  
 Survey of Pakistan, Murree



**Tehsildar Murree**  
 Punjab Revenue Department



**Manager GIS**  
 GIS Laboratory  
 World Wide Fund for Nature - Pakistan





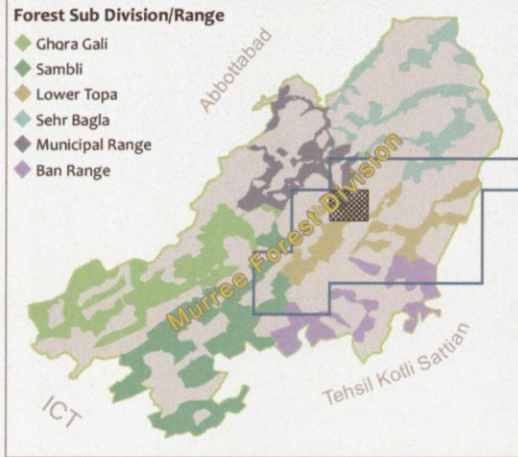
**Map Title**

GIS BASED BOUNDARY DELINEATION OF MURREE FOREST DIVISION INCLUDING THE ENCROACHED FOREST SECTIONS  
 MAP ID : LT/08 (1<sup>st</sup> EDITION 2013)  
 LOWER TOPA FOREST SUB DIVISION

**Map Locator**

**Forest Sub Division/Range**

- ◆ Ghora Gali
- ◆ Sambli
- ◆ Lower Topa
- ◆ Sehr Bagla
- ◆ Municipal Range
- ◆ Ban Range

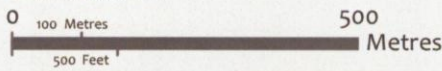


**Map Index**



**Map Scale & Coordinate System**

**Reference Scale:** 1:10,000 on A3 size paper  
 1 inch ~ 278 yards or 1 centimetre ~ 100 metres  
**Coordinate System:** GCS WGS 1984  
 Datum: WGS 1984  
**Grids and Graticule:**  
 Geographic Grid: WGS 1984  
 Value in: DD° MM' SS"  
 Metric Grid: UTM Zone 43S  
 Value in: Metres



**Map Legend**

- Pillar Mark
- Forest Bench Mark
- Sehadda
- ▲ Spot Height (m)
- Road
- Contour (m)
- Contour interval: 50m (164 ft)
- Forest Boundary
- Ambiguity Area
- Included Chak
- Murree Forest Division
- Water Channel/Nullah
- Water Pond/Tank
- + Encroachment

**Map Credits**

**Map Produced by:** GIS Laboratory, WWF - Pakistan in February, 2013

**Copyrights:**  
 It is an offence under the Copyright Act to make and issue any copy or copies of this map or any part of this map with or without alterations and additions, unless the prior written permission of the concerned department has been obtained.



**Divisional Forest Officer**  
 Murree Forest Division  
 Punjab Forest Department



**Officer-in-Charge**  
 No. 4 Party,  
 Survey of Pakistan, Murree



**Tehsildar Murree**  
 Punjab Revenue Department



**Manager GIS**  
 GIS Laboratory  
 World Wide Fund for Nature - Pakistan





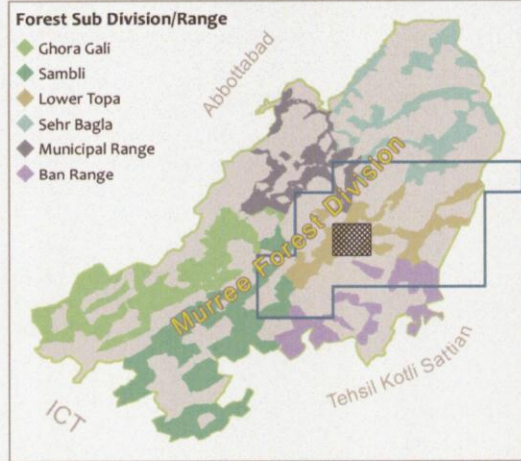
**Map Title**

GIS BASED BOUNDARY DELINEATION OF MURREE FOREST DIVISION INCLUDING THE ENCROACHED FOREST SECTIONS  
 MAP ID : LT/09 (1<sup>st</sup> EDITION 2013)  
 LOWER TOPA FOREST SUB DIVISION

**Map Locator**

**Forest Sub Division/Range**

- ◆ Ghora Gali
- ◆ Sambli
- ◆ Lower Topa
- ◆ Sehr Bagla
- ◆ Municipal Range
- ◆ Ban Range



**Map Index**



**Map Scale & Coordinate System**

**Reference Scale:** 1:10,000 on A3 size paper  
 1 inch ~ 278 yards or 1 centimetre ~ 100 metres  
**Coordinate System:** GCS WGS 1984  
 Datum: WGS 1984  
**Grids and Graticule:**  
 Geographic Grid: WGS 1984  
 Value in: DD° MM' SS"  
 Metric Grid: UTM Zone 43S  
 Value in: Metres



**Map Legend**

- Pillar Mark
- Forest Bench Mark
- ▭ Sehadha
- ▲ Spot Height (m)
- Road
- Contour (m)
- Contour interval: 50m (164 ft)
- Forest Boundary
- Ambiguity Area
- Included Chak
- Murree Forest Division
- Water Channel/Nullah
- Water Pond/Tank
- Encroachment

**Map Credits**

**Map Produced by:** GIS Laboratory, WWF - Pakistan in February, 2013

**Copyrights:**  
 It is an offence under the Copyright Act to make and issue any copy or copies of this map or any part of this map with or without alterations and additions, unless the prior written permission of the concerned department has been obtained.



**Divisional Forest Officer**  
 Murree Forest Division  
 Punjab Forest Department



**Officer-in-Charge**  
 No. 4 Party,  
 Survey of Pakistan, Murree



**Tehsildar Murree**  
 Punjab Revenue Department



**Manager GIS**  
 GIS Laboratory  
 World Wide Fund for Nature - Pakistan





### Map Title

GIS BASED BOUNDARY DELINEATION OF MURREE FOREST DIVISION INCLUDING THE ENCROACHED FOREST SECTIONS  
 MAP ID : LT/10 (1<sup>ST</sup> EDITION 2013)  
 LOWER TOPA FOREST SUB DIVISION

### Map Locator

#### Forest Sub Division/Range

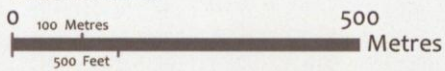


### Map Index



### Map Scale & Coordinate System

**Reference Scale:** 1:10,000 on A3 size paper  
 1 inch ~ 278 yards or 1 centimetre ~ 100 metres  
**Coordinate System:** GCS WGS 1984  
 Datum: WGS 1984  
**Grids and Graticule:**  
 Geographic Grid: WGS 1984  
 Value in: DD° MM' SS"  
 Metric Grid: UTM Zone 43S  
 Value in: Metres



### Map Legend

- Pillar Mark
- Forest Bench Mark
- Sehadda
- ▲ Spot Height (m)
- Road
- Contour (m)
- Contour interval: 50m (164 ft)
- Forest Boundary
- Ambiguity Area
- Included Chak
- Murree Forest Division
- Water Channel/Nullah
- Water Pond/Tank
- + Encroachment

### Map Credits

**Map Produced by:** GIS Laboratory, WWF - Pakistan in February, 2013

**Copyrights:**  
 It is an offence under the Copyright Act to make and issue any copy or copies of this map or any part of this map with or without alterations and additions, unless the prior written permission of the concerned department has been obtained.



**Divisional Forest Officer**  
 Murree Forest Division  
 Punjab Forest Department



**Officer-in-Charge**  
 No. 4 Party,  
 Survey of Pakistan, Murree



**Tehsildar Murree**  
 Punjab Revenue Department



**Manager GIS**  
 GIS Laboratory  
 World Wide Fund for Nature - Pakistan





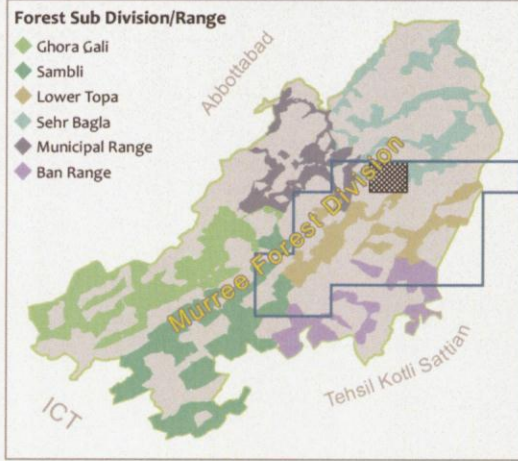
**Map Title**

**GIS BASED BOUNDARY DELINEATION OF MURREE FOREST DIVISION INCLUDING THE ENCROACHED FOREST SECTIONS**  
**MAP ID : LT/11 (1<sup>ST</sup> EDITION 2013)**  
**LOWER TOPA FOREST SUB DIVISION**

**Map Locator**

**Forest Sub Division/Range**

- ◆ Ghora Gali
- ◆ Sambli
- ◆ Lower Topa
- ◆ Sehr Bagla
- ◆ Municipal Range
- ◆ Ban Range

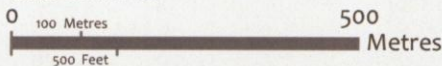


**Map Index**



**Map Scale & Coordinate System**

**Reference Scale:** 1:110,000 on A3 size paper  
 1 inch ~ 278 yards or 1 centimetre ~ 100 metres  
**Coordinate System:** GCS WGS 1984  
 Datum: WGS 1984  
**Grids and Graticule:**  
 Geographic Grid: WGS 1984  
 Value in: DD° MM' SS"  
 Metric Grid: UTM Zone 43S  
 Value in: Metres



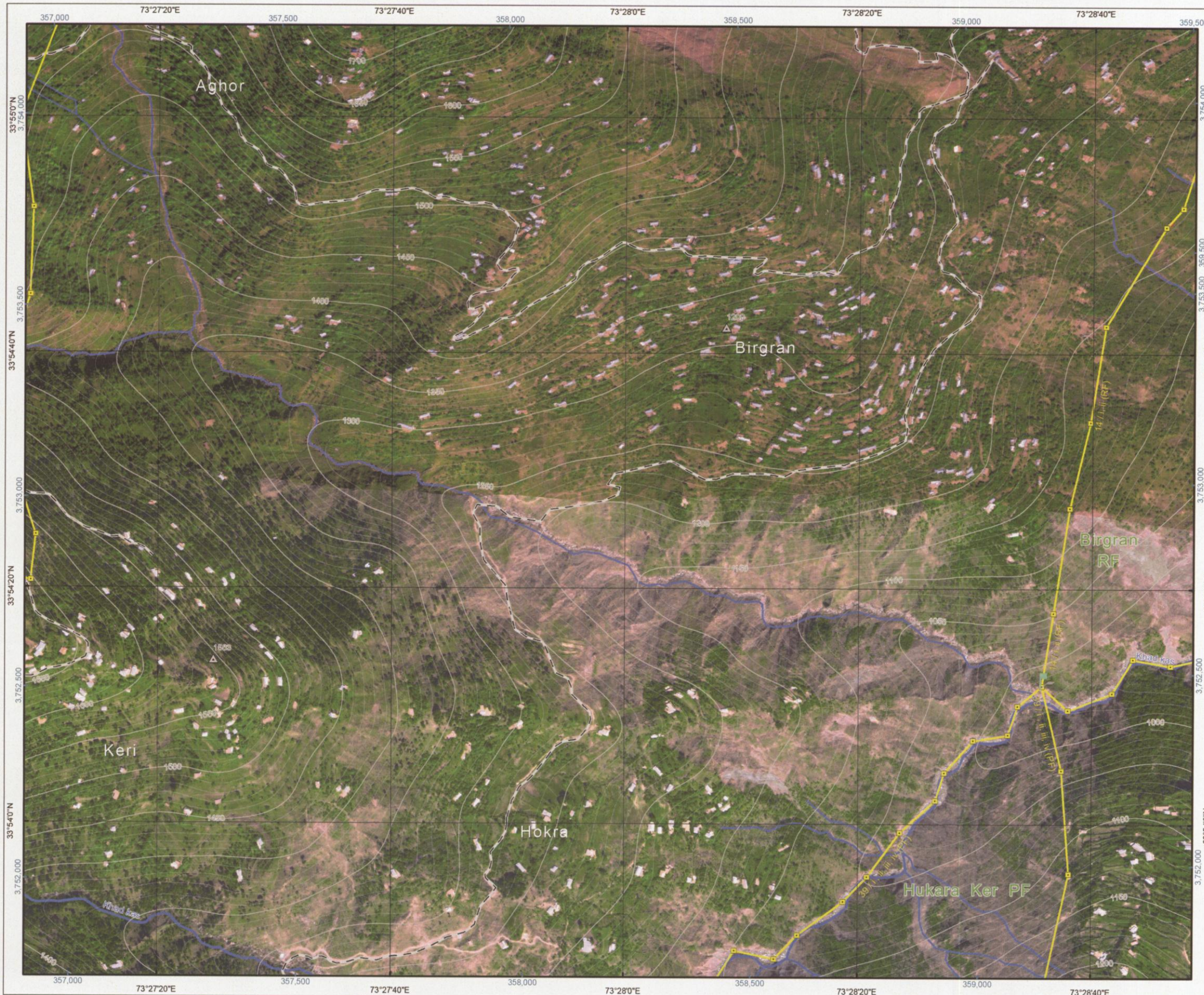
**Map Legend**

- Pillar Mark
- Forest Bench Mark
- Sehadda
- ▲ Spot Height (m)
- Road
- Contour (m)
- Contour interval: 50m (164 ft)
- Forest Boundary
- Ambiguity Area
- Included Chak
- Murree Forest Division
- Water Channel/Nullah
- Water Pond/Tank
- + Encroachment

**Map Credits**

**Map Produced by:** GIS Laboratory, WWF - Pakistan in February, 2013

**Copyrights:**  
 It is an offence under the Copyright Act to make and issue any copy or copies of this map or any part of this map with or without alterations and additions, unless the prior written permission of the concerned department has been obtained.



**Divisional Forest Officer**  
 Murree Forest Division  
 Punjab Forest Department



**Officer-in-Charge**  
 No. 4 Party,  
 Survey of Pakistan, Murree



**Tehsildar Murree**  
 Punjab Revenue Department



**Manager GIS**  
 GIS Laboratory  
 World Wide Fund for Nature - Pakistan





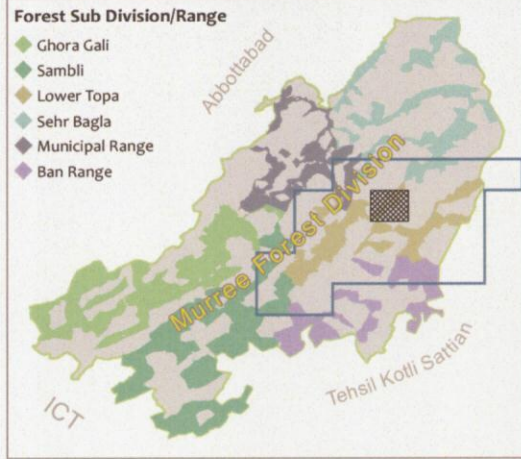
**Map Title**

GIS BASED BOUNDARY DELINEATION OF MURREE FOREST DIVISION INCLUDING THE ENCREACHED FOREST SECTIONS  
 MAP ID : LT/12 (1<sup>ST</sup> EDITION 2013)  
 LOWER TOPA FOREST SUB DIVISION

**Map Locator**

**Forest Sub Division/Range**

- ◆ Ghora Gali
- ◆ Sambli
- ◆ Lower Topa
- ◆ Sehr Bagla
- ◆ Municipal Range
- ◆ Ban Range



**Map Index**



Index to Sheet

**Map Scale & Coordinate System**

**Reference Scale:** 1:10,000 on A3 size paper  
 1 inch ~ 278 yards or 1 centimetre ~ 100 metres  
**Coordinate System:** GCS WGS 1984  
 Datum: WGS 1984

**Grids and Graticule:**  
 Geographic Grid: WGS 1984  
 Value in: DD° MM' SS"  
 Metric Grid: UTM Zone 43S  
 Value in: Metres



**Map Legend**

- Pillar Mark
- Forest Boundary
- Forest Bench Mark
- Ambiguity Area
- ▭ Sehadda
- Included Chak
- ▲ Spot Height (m)
- Murree Forest Division
- Road
- Water Channel/Nullah
- Contour (m)
- Water Pond/Tank
- Contour interval: 50m (164 ft)
- + Encroachment

**Map Credits**

**Map Produced by:** GIS Laboratory, WWF - Pakistan in February, 2013

**Copyrights:**  
 It is an offence under the Copyright Act to make and issue any copy or copies of this map or any part of this map with or without alterations and additions, unless the prior written permission of the concerned department has been obtained.



**Divisional Forest Officer**  
 Murree Forest Division  
 Punjab Forest Department



**Officer-in-Charge**  
 No. 4 Party,  
 Survey of Pakistan, Murree



**Tehsildar Murree**  
 Punjab Revenue Department



**Manager GIS**  
 GIS Laboratory  
 World Wide Fund for Nature - Pakistan





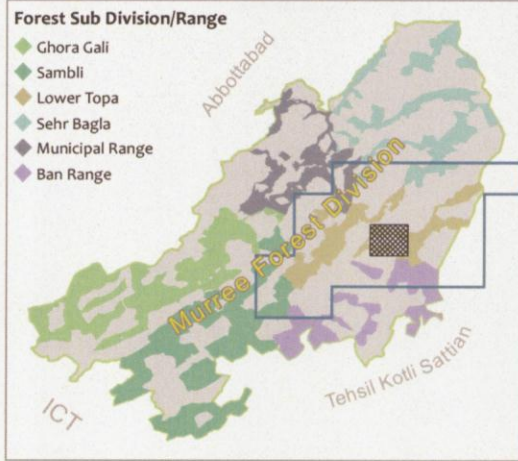
**Map Title**

GIS BASED BOUNDARY DELINEATION OF MURREE FOREST DIVISION INCLUDING THE ENCROACHED FOREST SECTIONS  
 MAP ID : LT/13 (1<sup>st</sup> EDITION 2013)  
 LOWER TOPA FOREST SUB DIVISION

**Map Locator**

**Forest Sub Division/Range**

- ◆ Ghora Gali
- ◆ Sambli
- ◆ Lower Topa
- ◆ Sehr Bagla
- ◆ Municipal Range
- ◆ Ban Range



**Map Index**



**Map Scale & Coordinate System**

**Reference Scale:** 1:10,000 on A3 size paper  
 1 inch ~ 278 yards or 1 centimetre ~ 100 metres  
**Coordinate System:** GCS WGS 1984  
 Datum: WGS 1984  
**Grids and Graticule:**  
 Geographic Grid: WGS 1984  
 Value in: DD° MM' SS"  
 Metric Grid: UTM Zone 43S  
 Value in: Metres



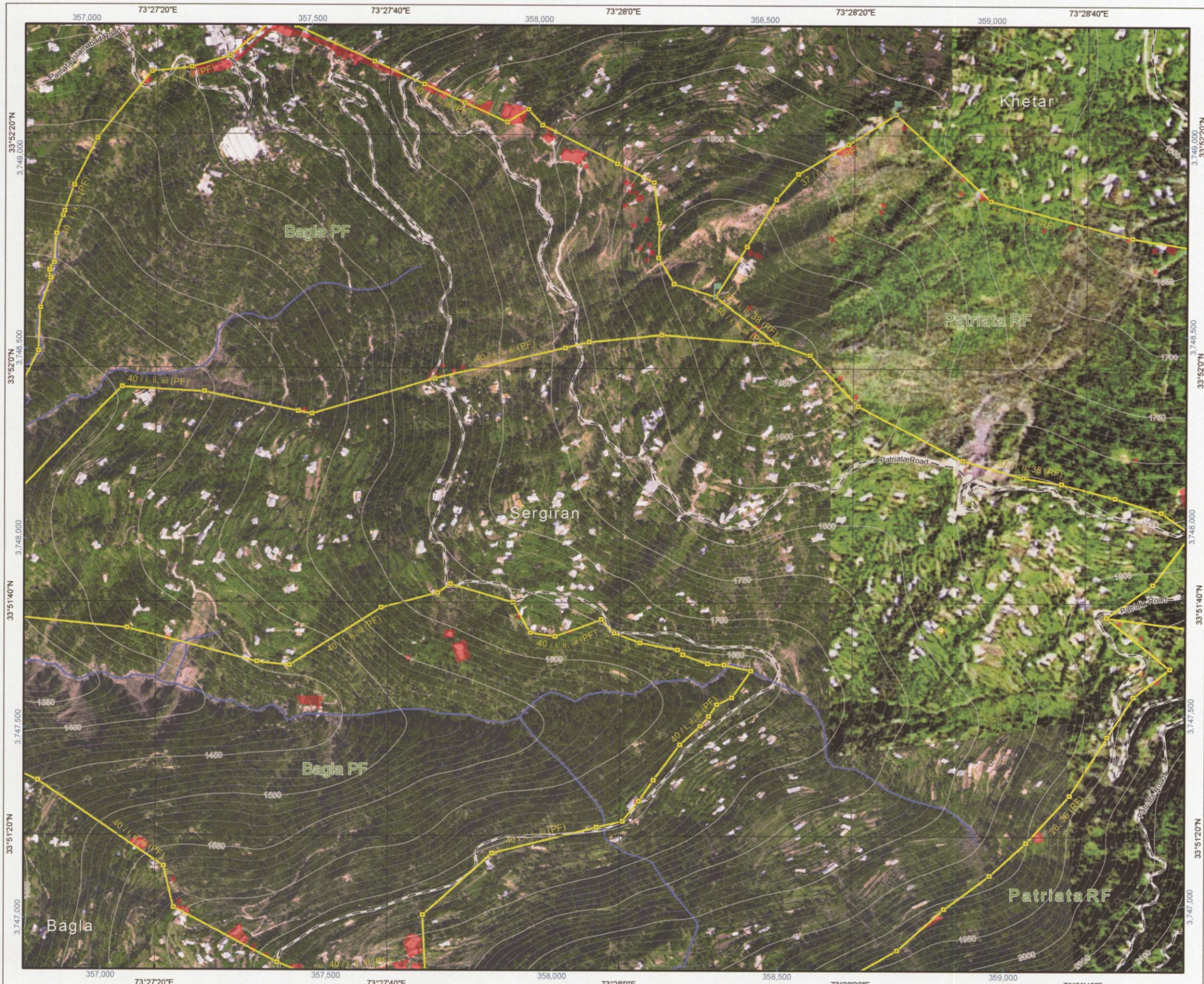
**Map Legend**

- Pillar Mark
  - Forest Boundary
  - Forest Bench Mark
  - Ambiguity Area
  - Sehadda
  - Included Chak
  - ▲ Spot Height (m)
  - Murree Forest Division
  - Road
  - Water Channel/Nullah
  - Water Pond/Tank
  - Contour (m)
  - + Encroachment
- Contour interval: 50m (164 ft)

**Map Credits**

**Map Produced by:** GIS Laboratory, WWF - Pakistan in February, 2013

**Copyrights:**  
 It is an offence under the Copyright Act to make and issue any copy or copies of this map or any part of this map with or without alterations and additions, unless the prior written permission of the concerned department has been obtained.



**Divisional Forest Officer**  
 Murree Forest Division  
 Punjab Forest Department



**Officer-in-Charge**  
 No. 4 Party,  
 Survey of Pakistan, Murree



**Tehsildar Murree**  
 Punjab Revenue Department



**Manager GIS**  
 GIS Laboratory  
 World Wide Fund for Nature - Pakistan





**Map Title**

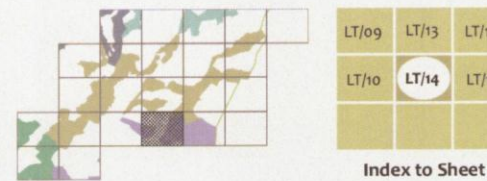
GIS BASED BOUNDARY DELINEATION OF MURREE FOREST DIVISION INCLUDING THE ENCROACHED FOREST SECTIONS  
 MAP ID : LT/14 (1<sup>ST</sup> EDITION 2013)  
 LOWER TOPA FOREST SUB DIVISION

**Map Locator**

**Forest Sub Division/Range**



**Map Index**



**Map Scale & Coordinate System**

**Reference Scale:** 1:10,000 on A3 size paper  
 1 inch ~ 278 yards or 1 centimetre ~ 100 metres  
**Coordinate System:** GCS WGS 1984  
 Datum: WGS 1984  
**Grids and Graticule:**  
 Geographic Grid: WGS 1984  
 Value in: DD° MM' SS"  
 Metric Grid: UTM Zone 43S  
 Value in: Metres



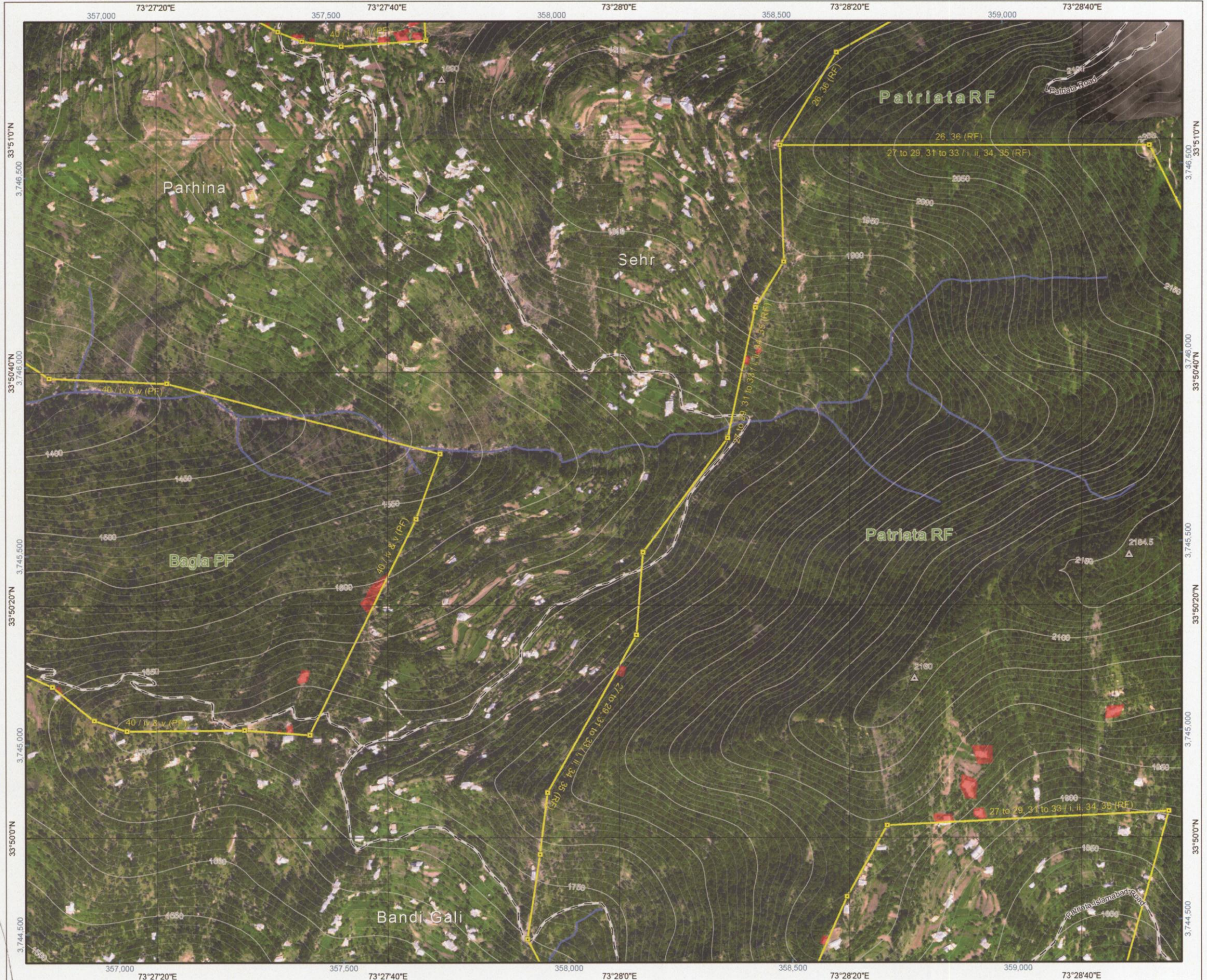
**Map Legend**

- Pillar Mark
  - Forest Boundary
  - Forest Bench Mark
  - Ambiguity Area
  - Included Chak
  - Sehadda
  - Murree Forest Division
  - Spot Height (m)
  - Water Channel/Nullah
  - Road
  - Water Pond/Tank
  - Contour (m)
  - Encroachment
- Contour interval: 50m (164 ft)

**Map Credits**

**Map Produced by:** GIS Laboratory, WWF - Pakistan in February, 2013

**Copyrights:**  
 It is an offence under the Copyright Act to make and issue any copy or copies of this map or any part of this map with or without alterations and additions, unless the prior written permission of the concerned department has been obtained.



**Divisional Forest Officer**  
 Murree Forest Division  
 Punjab Forest Department



**Officer-in-Charge**  
 No. 4 Party,  
 Survey of Pakistan, Murree



**Fehsildar Murree**  
 Punjab Revenue Department



**Manager GIS**  
 GIS Laboratory  
 World Wide Fund for Nature - Pakistan





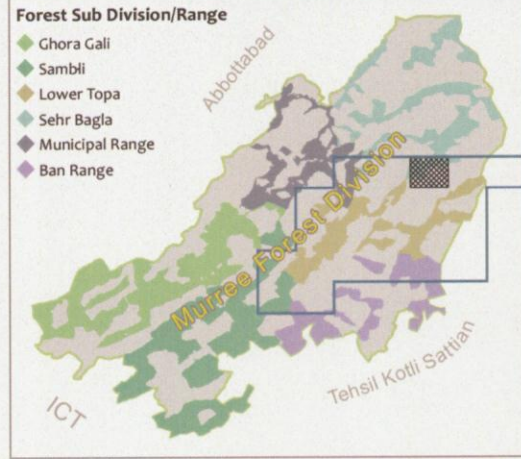
**Map Title**

**GIS BASED BOUNDARY DELINEATION OF MURREE FOREST DIVISION INCLUDING THE ENCREACHED FOREST SECTIONS**  
**MAP ID : LT/15 (1<sup>ST</sup> EDITION 2013)**  
**LOWER TOPA FOREST SUB DIVISION**

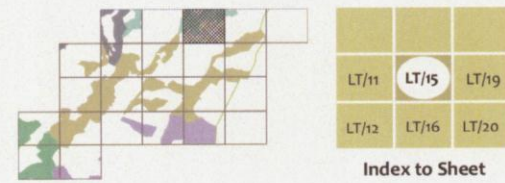
**Map Locator**

**Forest Sub Division/Range**

- ◆ Ghora Gali
- ◆ Sambli
- ◆ Lower Topa
- ◆ Sehr Bagla
- ◆ Municipal Range
- ◆ Ban Range



**Map Index**



**Map Scale & Coordinate System**

**Reference Scale:** 1:110,000 on A3 size paper  
 1 inch ~ 278 yards or 1 centimetre ~ 100 metres  
**Coordinate System:** GCS WGS 1984  
 Datum: WGS 1984  
**Grids and Graticule:**  
 Geographic Grid: WGS 1984  
 Value in: DD° MM' SS"  
 Metric Grid: UTM Zone 43S  
 Value in: Metres



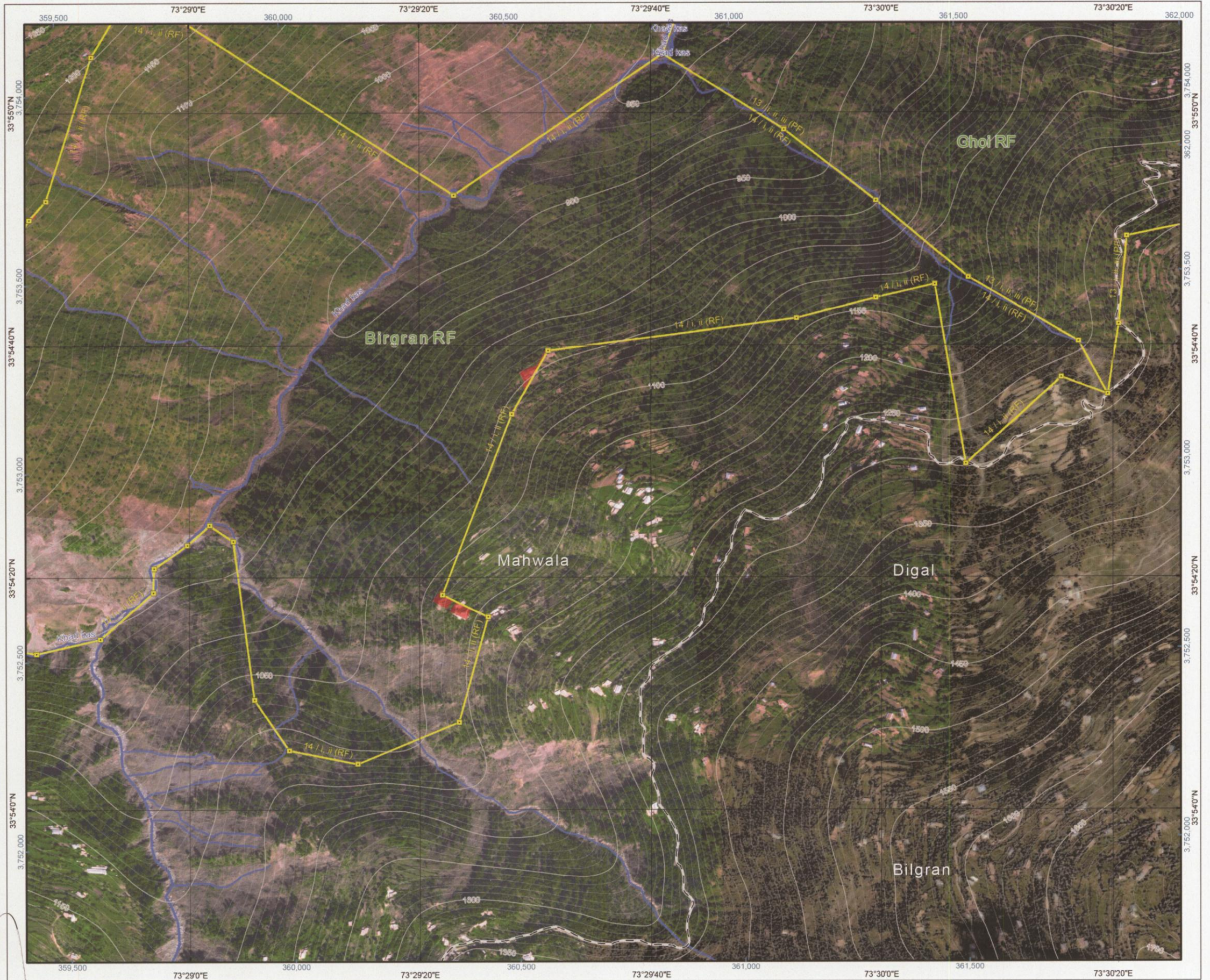
**Map Legend**

- Pillar Mark
- Forest Bench Mark
- ▭ Sehadha
- ▲ Spot Height (m)
- Road
- Contour (m)
- Contour Interval: 50m (164 ft)
- Forest Boundary
- Ambiguity Area
- ▭ Included Chak
- Murree Forest Division
- Water Channel/Nullah
- Water Pond/Tank
- Encroachment

**Map Credits**

**Map Produced by:** GIS Laboratory, WWF - Pakistan in February, 2013

**Copyrights:**  
 It is an offence under the Copyright Act to make and issue any copy or copies of this map or any part of this map with or without alterations and additions, unless the prior written permission of the concerned department has been obtained.



**Divisional Forest Officer**  
 Murree Forest Division  
 Punjab Forest Department



**Officer-in-Charge**  
 No. 4 Party,  
 Survey of Pakistan, Murree



**Tehsildar Murree**  
 Punjab Revenue Department



**Manager GIS**  
 GIS Laboratory  
 World Wide Fund for Nature - Pakistan





**Map Title**

GIS BASED BOUNDARY DELINEATION OF MURREE FOREST DIVISION INCLUDING THE ENCRACHED FOREST SECTIONS  
 MAP ID : LT/16 (1<sup>ST</sup> EDITION 2013)  
 LOWER TOPA FOREST SUB DIVISION

**Map Locator**

**Forest Sub Division/Range**



**Map Index**



**Map Scale & Coordinate System**

**Reference Scale:** 1:10,000 on A3 size paper  
 1 inch ~ 278 yards or 1 centimetre ~ 100 metres  
**Coordinate System:** GCS WGS 1984  
 Datum: WGS 1984  
**Grids and Graticule:**  
 Geographic Grid: WGS 1984  
 Value in: DD° MM' SS"  
 Metric Grid: UTM Zone 43S  
 Value in: Metres



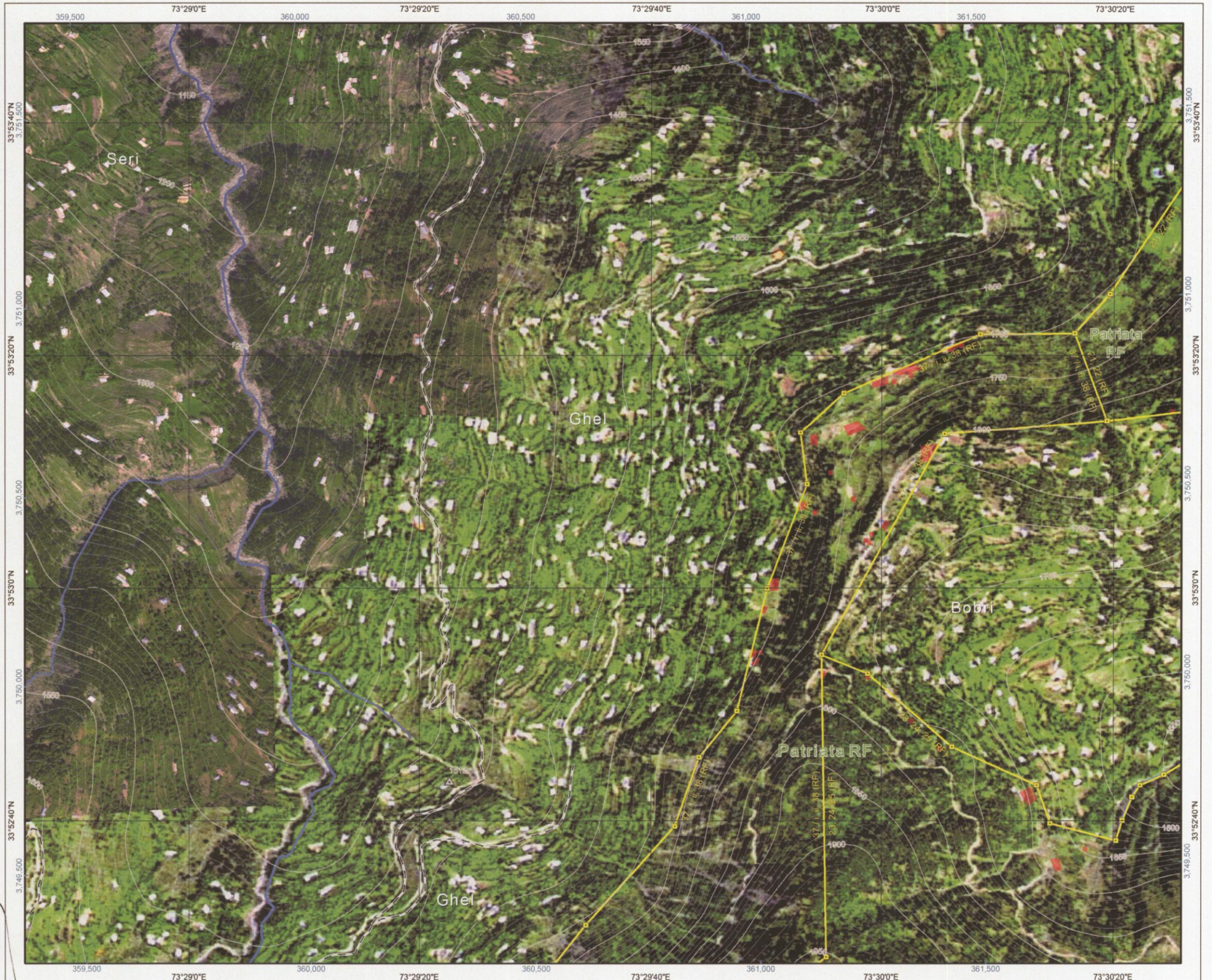
**Map Legend**

- Pillar Mark
- Forest Bench Mark
- ▭ Sehadra
- ▲ Spot Height (m)
- Road
- Contour (m)
- Contour interval: 50m (164 ft)
- Forest Boundary
- Ambiguity Area
- ▭ Included Chak
- Murree Forest Division
- Water Channel/Nullah
- Water Pond/Tank
- Encroachment

**Map Credits**

**Map Produced by:** GIS Laboratory, WWF - Pakistan in February, 2013

**Copyrights:**  
 It is an offence under the Copyright Act to make and issue any copy or copies of this map or any part of this map with or without alterations and additions, unless the prior written permission of the concerned department has been obtained.



**Divisional Forest Officer**  
 Murree Forest Division  
 Punjab Forest Department



**Officer-in-Charge**  
 No. 4 Party,  
 Survey of Pakistan, Murree



**Tehsildar Murree**  
 Punjab Revenue Department



**Manager GIS**  
 GIS Laboratory  
 World Wide Fund for Nature - Pakistan





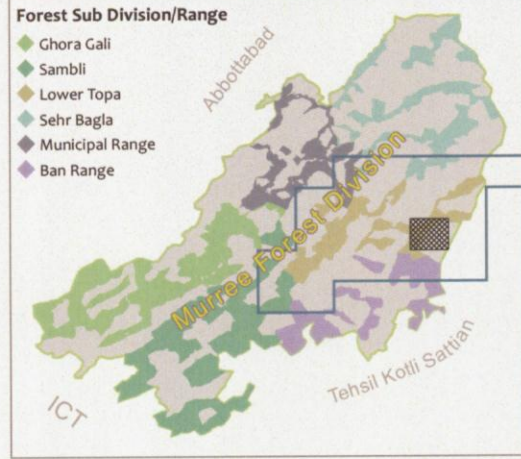
**Map Title**

GIS BASED BOUNDARY DELINEATION OF MURREE FOREST DIVISION INCLUDING THE ENCROACHED FOREST SECTIONS  
 MAP ID : LT/17 (1<sup>ST</sup> EDITION 2013)  
 LOWER TOPA FOREST SUB DIVISION

**Map Locator**

**Forest Sub Division/Range**

- ◆ Ghora Gali
- ◆ Sambli
- ◆ Lower Topa
- ◆ Sehr Bagla
- ◆ Municipal Range
- ◆ Ban Range



**Map Index**


Index to Sheet

**Map Scale & Coordinate System**

**Reference Scale:** 1:110,000 on A3 size paper  
 1 inch ~ 278 yards or 1 centimetre ~ 100 metres  
**Coordinate System:** GCS WGS 1984  
 Datum: WGS 1984  
**Grids and Graticule:**  
 Geographic Grid: WGS 1984  
 Value in: DD° MM' SS"  
 Metric Grid: UTM Zone 43S  
 Value in: Metres



**Map Legend**

- Pillar Mark
- Forest Boundary
- Forest Bench Mark
- Ambiguity Area
- Sehadda
- Included Chak
- Spot Height (m)
- Murree Forest Division
- Water Channel/Nullah
- Road
- Water Pond/Tank
- Contour (m)
- Encroachment
- Contour interval: 50m (164 ft)

**Map Credits**

**Map Produced by:** GIS Laboratory, WWF - Pakistan in February, 2013

**Copyrights:**  
 It is an offence under the Copyright Act to make and issue any copy or copies of this map or any part of this map with or without alterations and additions, unless the prior written permission of the concerned department has been obtained.



**Divisional Forest Officer**  
 Murree Forest Division  
 Punjab Forest Department



**Officer-in-Charge**  
 No. 4 Party,  
 Survey of Pakistan, Murree



**Tehsildar Murree**  
 Punjab Revenue Department



**Manager GIS**  
 GIS Laboratory  
 World Wide Fund for Nature - Pakistan

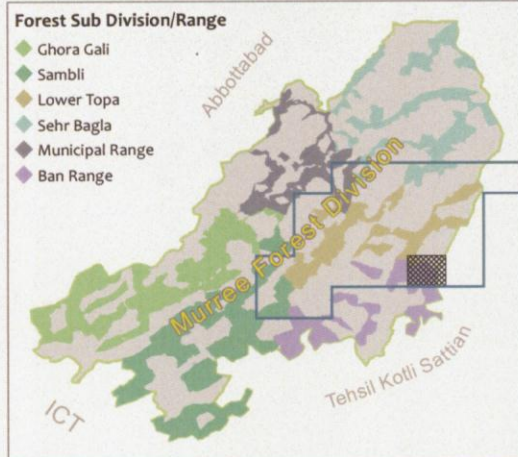




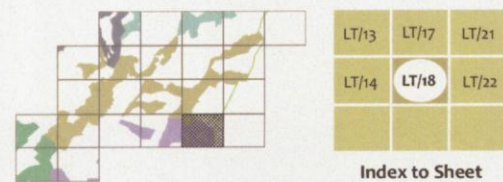
**Map Title**

GIS BASED BOUNDARY DELINEATION OF MURREE FOREST DIVISION INCLUDING THE ENCROACHED FOREST SECTIONS  
 MAP ID : LT/18 (1<sup>st</sup> EDITION 2013)  
 LOWER TOPA FOREST SUB DIVISION

**Map Locator**

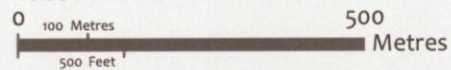


**Map Index**



**Map Scale & Coordinate System**

**Reference Scale:** 1:110,000 on A3 size paper  
 1 inch ~ 278 yards or 1 centimetre ~ 100 metres  
**Coordinate System:** GCS WGS 1984  
 Datum: WGS 1984  
**Grids and Graticule:**  
 Geographic Grid: WGS 1984  
 Value in: DD° MM' SS"  
 Metric Grid: UTM Zone 43S  
 Value in: Metres



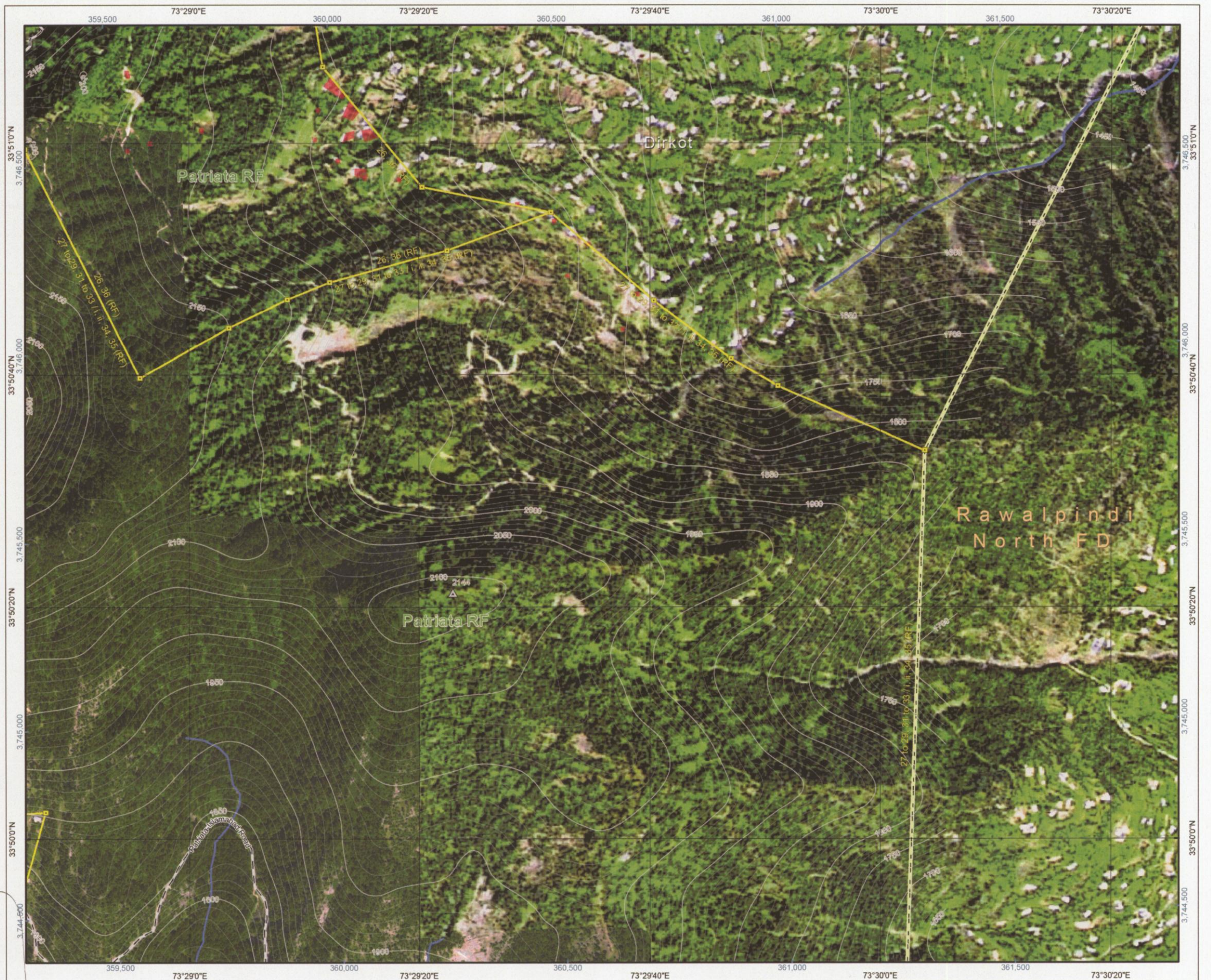
**Map Legend**

- Pillar Mark
- Forest Boundary
- Forest Bench Mark
- Ambiguity Area
- Included Chak
- Sehadda
- Murree Forest Division
- Spot Height (m)
- Water Channel/Nullah
- Road
- Water Pond/Tank
- Contour (m)
- Encroachment
- Contour interval: 50m (164 ft)

**Map Credits**

**Map Produced by:** GIS Laboratory, WWF - Pakistan in February, 2013

**Copyrights:**  
 It is an offence under the Copyright Act to make and issue any copy or copies of this map or any part of this map with or without alterations and additions, unless the prior written permission of the concerned department has been obtained.



**Divisional Forest Officer**  
 Murree Forest Division  
 Punjab Forest Department



**Officer-in-Charge**  
 No. 4 Party,  
 Survey of Pakistan, Murree



**Tehsildar Murree**  
 Punjab Revenue Department



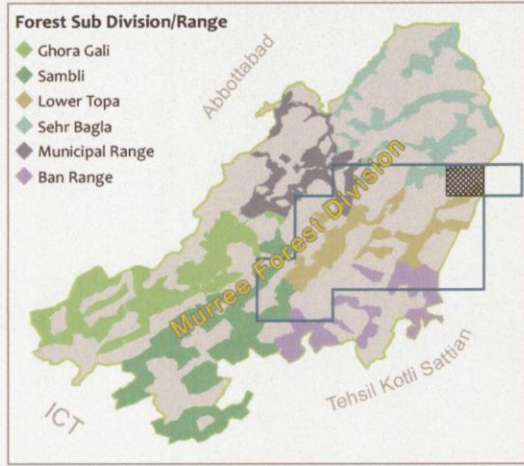
**Manager GIS**  
 GIS Laboratory  
 World Wide Fund for Nature - Pakistan





**Map Title**  
 GIS BASED BOUNDARY DELINEATION OF  
 MURREE FOREST DIVISION INCLUDING  
 THE ENCROACHED FOREST SECTIONS  
 MAP ID : LT/19 (1<sup>ST</sup> EDITION 2013)  
 LOWER TOPA FOREST SUB DIVISION

**Map Locator**



**Map Index**



**Map Scale & Coordinate System**

**Reference Scale:** 1:110,000 on A3 size paper  
 1 inch ~ 278 yards or 1 centimetre ~ 100 metres  
**Coordinate System:** GCS WGS 1984  
 Datum: WGS 1984  
**Grids and Graticule:**  
 Geographic Grid: WGS 1984  
 Value in: DD° MM' SS"  
 Metric Grid: UTM Zone 43S  
 Value in: Metres

**Map Legend**

- Pillar Mark
- Forest Bench Mark
- ▭ Sehadada
- ▲ Spot Height (m)
- Road
- Contour (m)
- Contour interval: 50m (164 ft)
- Forest Boundary
- Ambiguity Area
- Included Chak
- Murree Forest Division
- Water Channel/Nullah
- Water Pond/Tank
- Encroachment

**Map Credits**

**Map Produced by:** GIS Laboratory, WWF - Pakistan in February, 2013

**Copyrights:**  
 It is an offence under the Copyright Act to make and issue any copy or copies of this map or any part of this map with or without alterations and additions, unless the prior written permission of the concerned department has been obtained.



Map 19 of 23

**Divisional Forest Officer**  
 Murree Forest Division  
 Punjab Forest Department

**Officer-in-Charge**  
 No. 4 Party,  
 Survey of Pakistan, Murree

**Tehsildar Murree**  
 Punjab Revenue Department

**Manager GIS**  
 GIS Laboratory  
 World Wide Fund for Nature - Pakistan



**Map Title**

GIS BASED BOUNDARY DELINEATION OF MURREE FOREST DIVISION INCLUDING THE ENCROACHED FOREST SECTIONS  
 MAP ID : LT/20 (1<sup>st</sup> EDITION 2013)  
 LOWER TOPA FOREST SUB DIVISION

**Map Locator**

**Forest Sub Division/Range**



**Map Index**



**Map Scale & Coordinate System**

**Reference Scale:** 1:10,000 on A3 size paper  
 1 inch ~ 278 yards or 1 centimetre ~ 100 metres  
**Coordinate System:** GCS WGS 1984  
 Datum: WGS 1984  
**Grids and Graticule:**  
 Geographic Grid: WGS 1984  
 Value in: DD° MM' SS"  
 Metric Grid: UTM Zone 43S  
 Value in: Metres



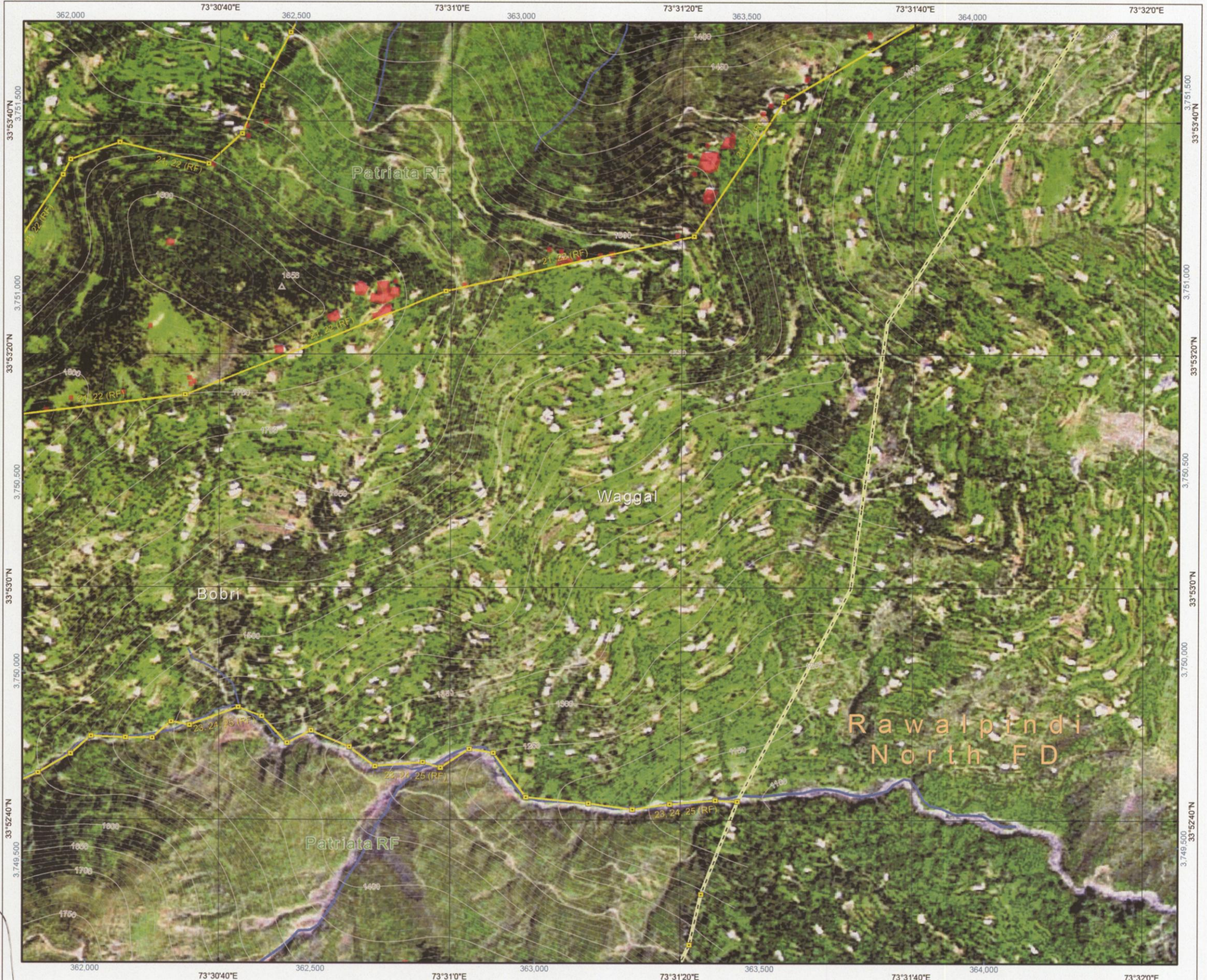
**Map Legend**

- Pillar Mark
- Forest Boundary
- Forest Bench Mark
- Ambiguity Area
- Sehadda
- Included Chak
- Spot Height (m)
- Murree Forest Division
- Road
- Water Channel/Nullah
- Contour (m)
- Water Pond/Tank
- Encroachment
- Contour interval: 50m (164 ft)

**Map Credits**

**Map Produced by:** GIS Laboratory, WWF - Pakistan in February, 2013

**Copyrights:**  
 It is an offence under the Copyright Act to make and issue any copy or copies of this map or any part of this map with or without alterations and additions, unless the prior written permission of the concerned department has been obtained.



**Divisional Forest Officer**  
 Murree Forest Division  
 Punjab Forest Department



**Officer-in-Charge**  
 No. 4 Party,  
 Survey of Pakistan, Murree



**Tehsildar Murtee**  
 Punjab Revenue Department



**Manager GIS**  
 GIS Laboratory  
 World Wide Fund for Nature - Pakistan





**Map Title**

GIS BASED BOUNDARY DELINEATION OF MURREE FOREST DIVISION INCLUDING THE ENCROACHED FOREST SECTIONS  
 MAP ID : LT/21 (1<sup>ST</sup> EDITION 2013)  
 LOWER TOPA FOREST SUB DIVISION

**Map Locator**

**Forest Sub Division/Range**



**Map Index**



**Map Scale & Coordinate System**

**Reference Scale:** 1:10,000 on A3 size paper  
 1 inch ~ 278 yards or 1 centimetre ~ 100 metres  
**Coordinate System:** GCS WGS 1984  
 Datum: WGS 1984  
**Grids and Graticule:**  
 Geographic Grid: WGS 1984  
 Value in: DD° MM' SS"  
 Metric Grid: UTM Zone 43S  
 Value in: Metres



**Map Legend**

- Pillar Mark
- Forest Boundary
- Forest Bench Mark
- Ambiguity Area
- Sehadda
- Included Chak
- Spot Height (m)
- Murree Forest Division
- Road
- Water Channel/Nullah
- Water Pond/Tank
- Contour (m)  
Contour interval: 50m (164 ft)
- Encroachment

**Map Credits**

**Map Produced by:** GIS Laboratory, WWF - Pakistan in February, 2013

**Copyrights:**  
 It is an offence under the Copyright Act to make and issue any copy or copies of this map or any part of this map with or without alterations and additions, unless the prior written permission of the concerned department has been obtained.



**Divisional Forest Officer**  
 Murree Forest Division  
 Punjab Forest Department



**Officer-in-Charge**  
 No. 4 Party,  
 Survey of Pakistan, Murree



**Tehsildar Murree**  
 Punjab Revenue Department



**Manager GIS**  
 GIS Laboratory  
 World Wide Fund for Nature - Pakistan





**Map Title**

**GIS BASED BOUNDARY DELINEATION OF MURREE FOREST DIVISION INCLUDING THE ENCROACHED FOREST SECTIONS**  
**MAP ID : LT/22 (1<sup>ST</sup> EDITION 2013)**  
**LOWER TOPA FOREST SUB DIVISION**

**Map Locator**

**Forest Sub Division/Range**



**Map Index**



**Map Scale & Coordinate System**

**Reference Scale:** 1:10,000 on A3 size paper  
 1 inch ~ 278 yards or 1 centimetre ~ 100 metres  
**Coordinate System:** GCS WGS 1984  
 Datum: WGS 1984  
**Grids and Graticule:**  
 Geographic Grid: WGS 1984  
 Value in: DD° MM' SS"  
 Metric Grid: UTM Zone 43S  
 Value in: Metres



**Map Legend**

- Pillar Mark
- Forest Boundary
- Forest Bench Mark
- Ambiguity Area
- Sehadda
- Included Chak
- Spot Height (m)
- Murree Forest Division
- Road
- Water Channel/Nullah
- Contour (m)  
Contour interval: 50m (164 ft)
- Water Pond/Tank
- Encroachment

**Map Credits**

**Map Produced by:** GIS Laboratory, WWF - Pakistan in February, 2013

**Copyrights:**  
 It is an offence under the Copyright Act to make and issue any copy or copies of this map or any part of this map with or without alterations and additions, unless the prior written permission of the concerned department has been obtained.



**Divisional Forest Officer**  
 Murree Forest Division  
 Punjab Forest Department



**Officer-in-Charge**  
 No. 4 Party,  
 Survey of Pakistan, Murree



**Tehsildar Murree**  
 Punjab Revenue Department



**Manager GIS**  
 GIS Laboratory  
 World Wide Fund for Nature - Pakistan

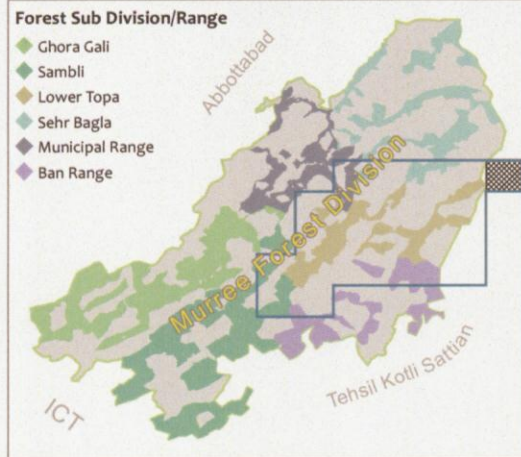




**Map Title**

GIS BASED BOUNDARY DELINEATION OF MURREE FOREST DIVISION INCLUDING THE ENCROACHED FOREST SECTIONS  
 MAP ID : LT/23 (1<sup>st</sup> EDITION 2013)  
 LOWER TOPA FOREST SUB DIVISION

**Map Locator**



**Map Index**



**Map Scale & Coordinate System**

**Reference Scale:** 1:10,000 on A3 size paper  
 1 inch ~ 278 yards or 1 centimetre ~ 100 metres  
**Coordinate System:** GCS WGS 1984  
 Datum: WGS 1984  
**Grids and Graticule:**  
 Geographic Grid: WGS 1984  
 Value in: DD° MM' SS"  
 Metric Grid: UTM Zone 43S  
 Value in: Metres



**Map Legend**

- Pillar Mark
- Forest Boundary
- Forest Bench Mark
- Ambiguity Area
- Sehadda
- Included Chak
- Spot Height (m)
- Murree Forest Division
- Road
- Water Channel/Nullah
- Contour (m)
- Water Pond/Tank
- Contour interval: 50m (164 ft)
- Encroachment

**Map Credits**

**Map Produced by:** GIS Laboratory, WWF - Pakistan in February, 2013

**Copyrights:**  
 It is an offence under the Copyright Act to make and issue any copy or copies of this map or any part of this map with or without alterations and additions, unless the prior written permission of the concerned department has been obtained.



**Divisional Forest Officer**  
 Murree Forest Division  
 Punjab Forest Department



**Officer-in-Charge**  
 No. 4 Party,  
 Survey of Pakistan, Murree



**Tehsildar Murree**  
 Punjab Revenue Department



**Manager GIS**  
 GIS Laboratory  
 World Wide Fund for Nature - Pakistan

